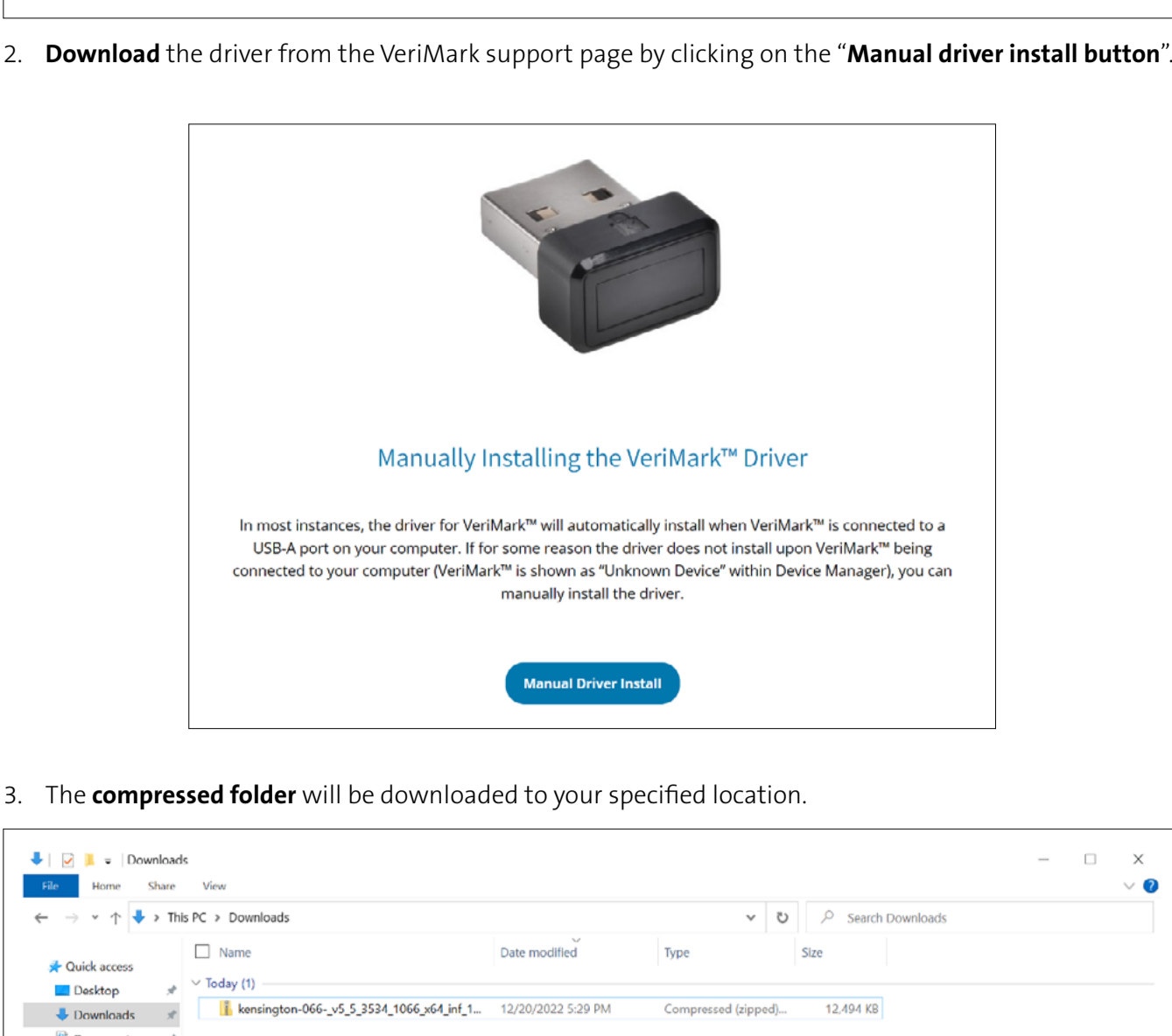


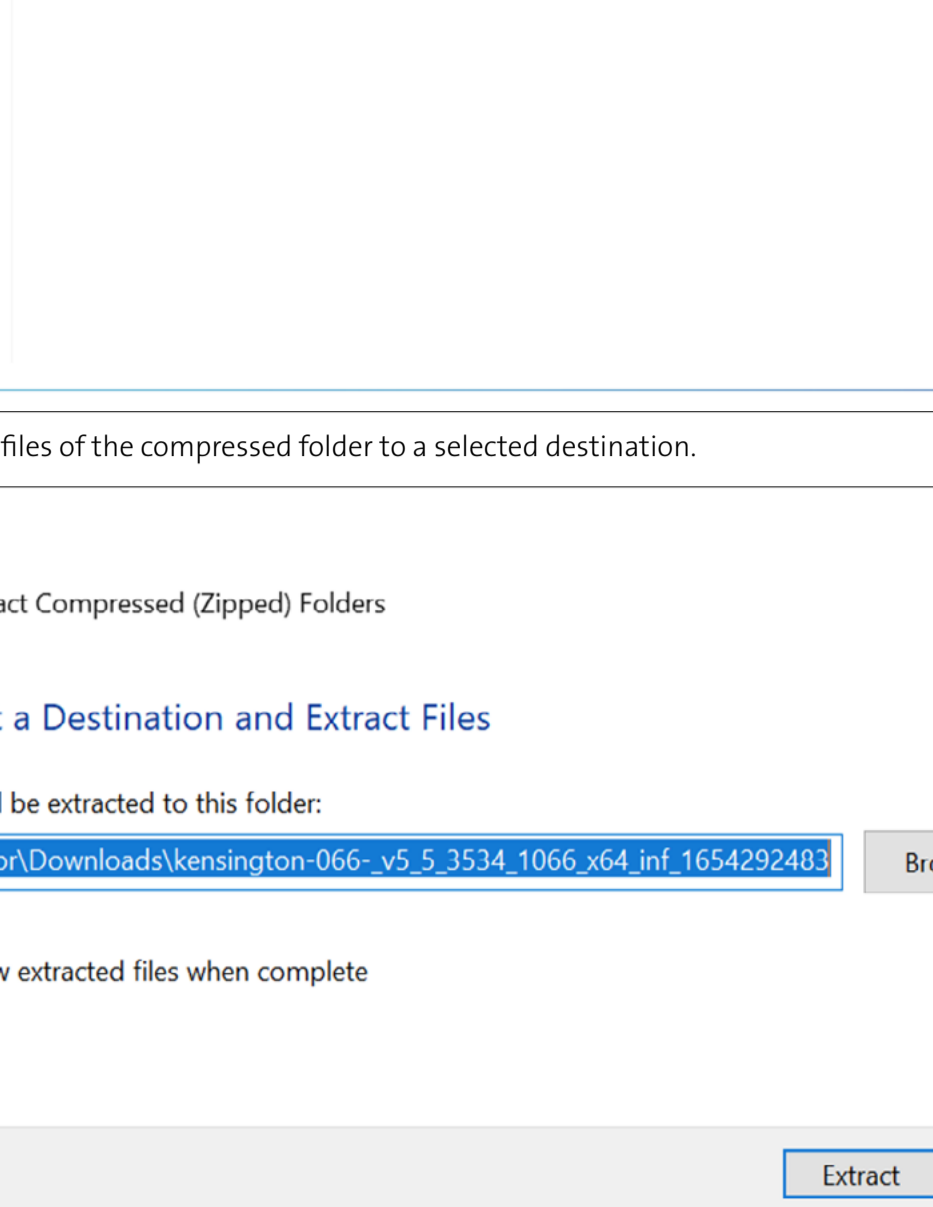
VeriMark Windows 10 Manual Driver Install

Install the driver through Windows 10 Manual driver install

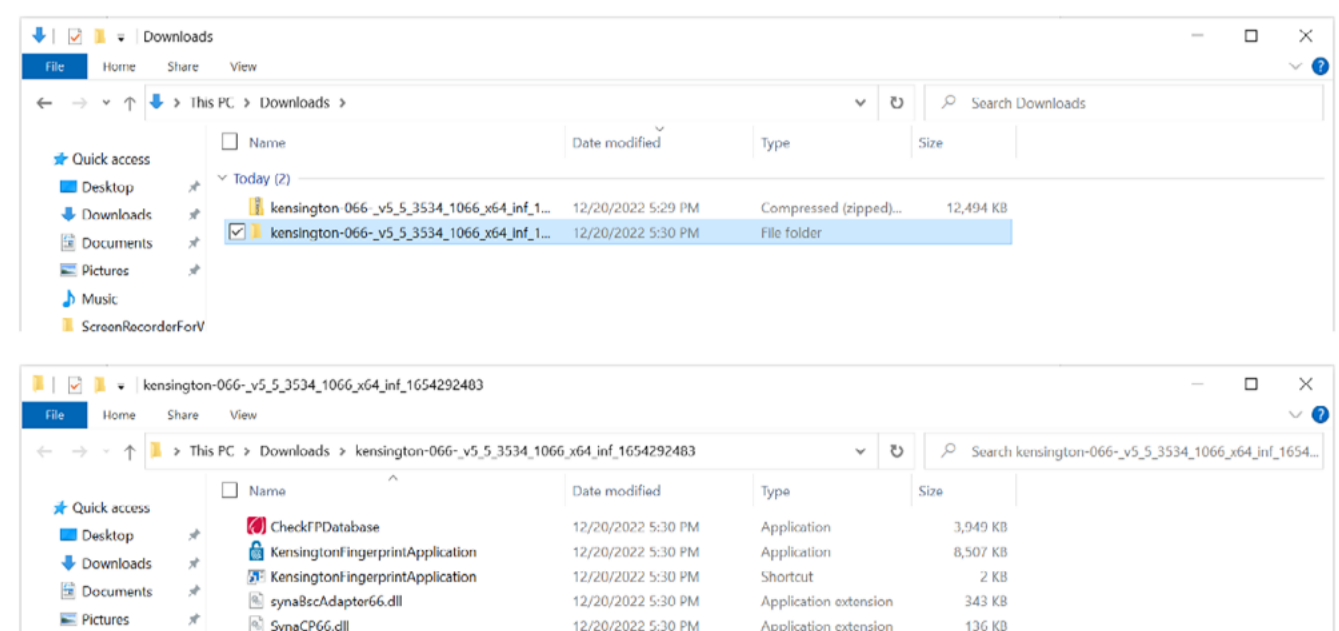
1. On the VeriMark support page, select **VeriMark** to go to the setup guides and driver download.



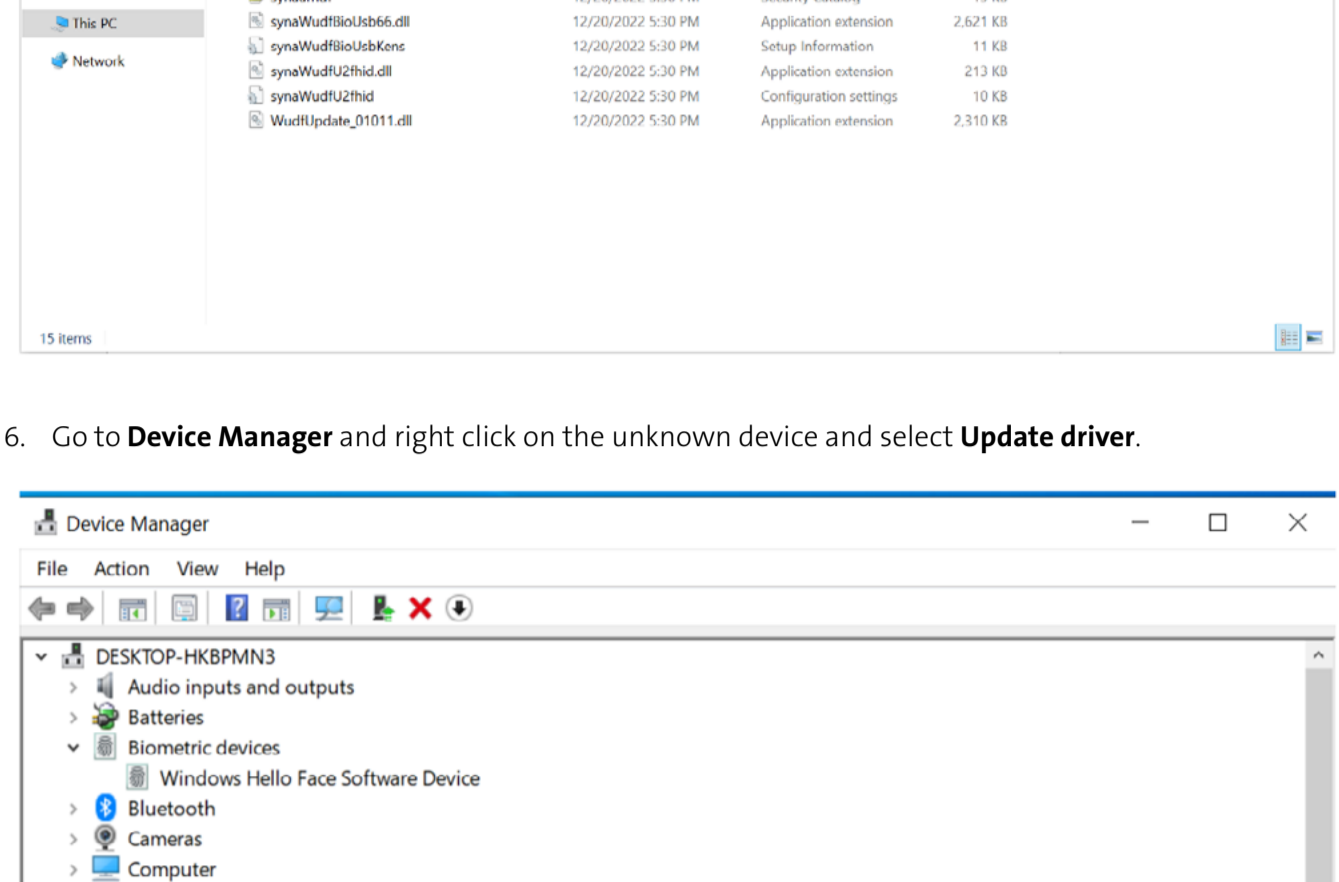
2. Download the driver from the VeriMark support page by clicking on the **"Manual driver install button"**.



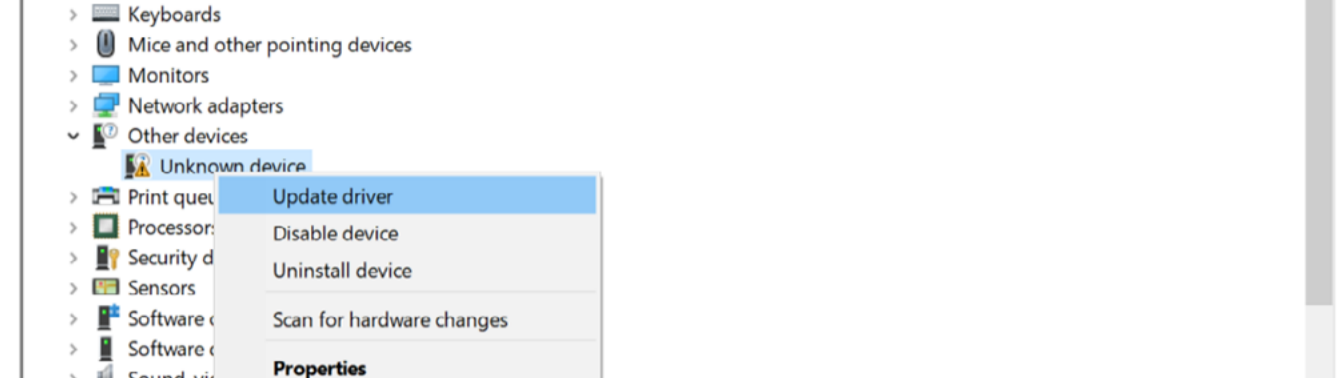
3. The **compressed folder** will be downloaded to your specified location.



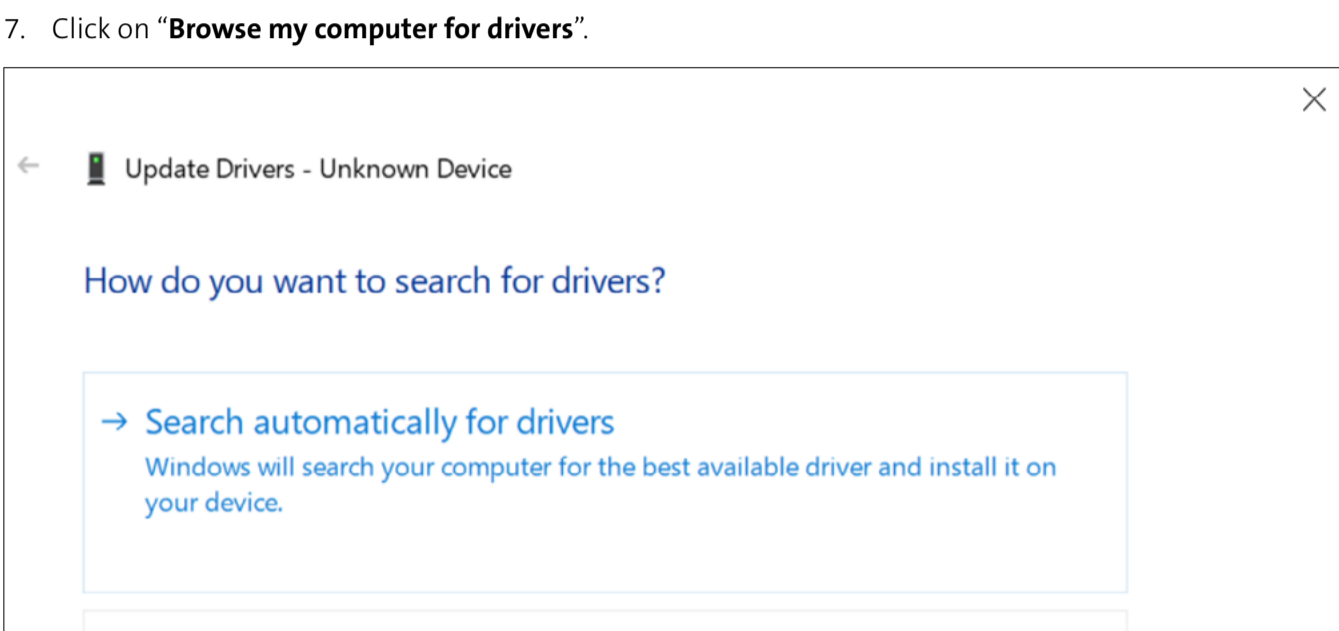
4. **Extract** the files of the compressed folder to a selected destination.



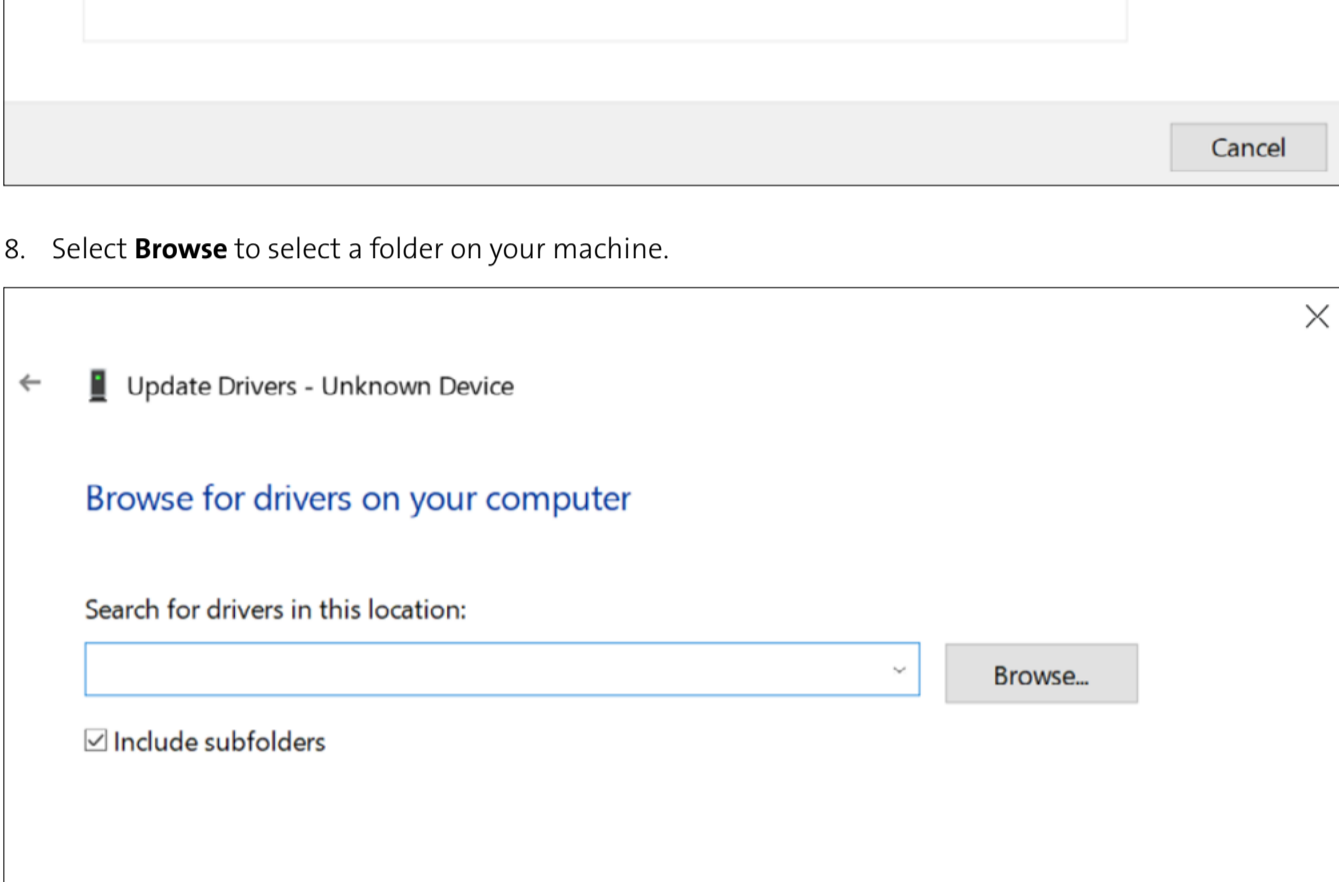
5. A **folder** with the extracted files will be created.



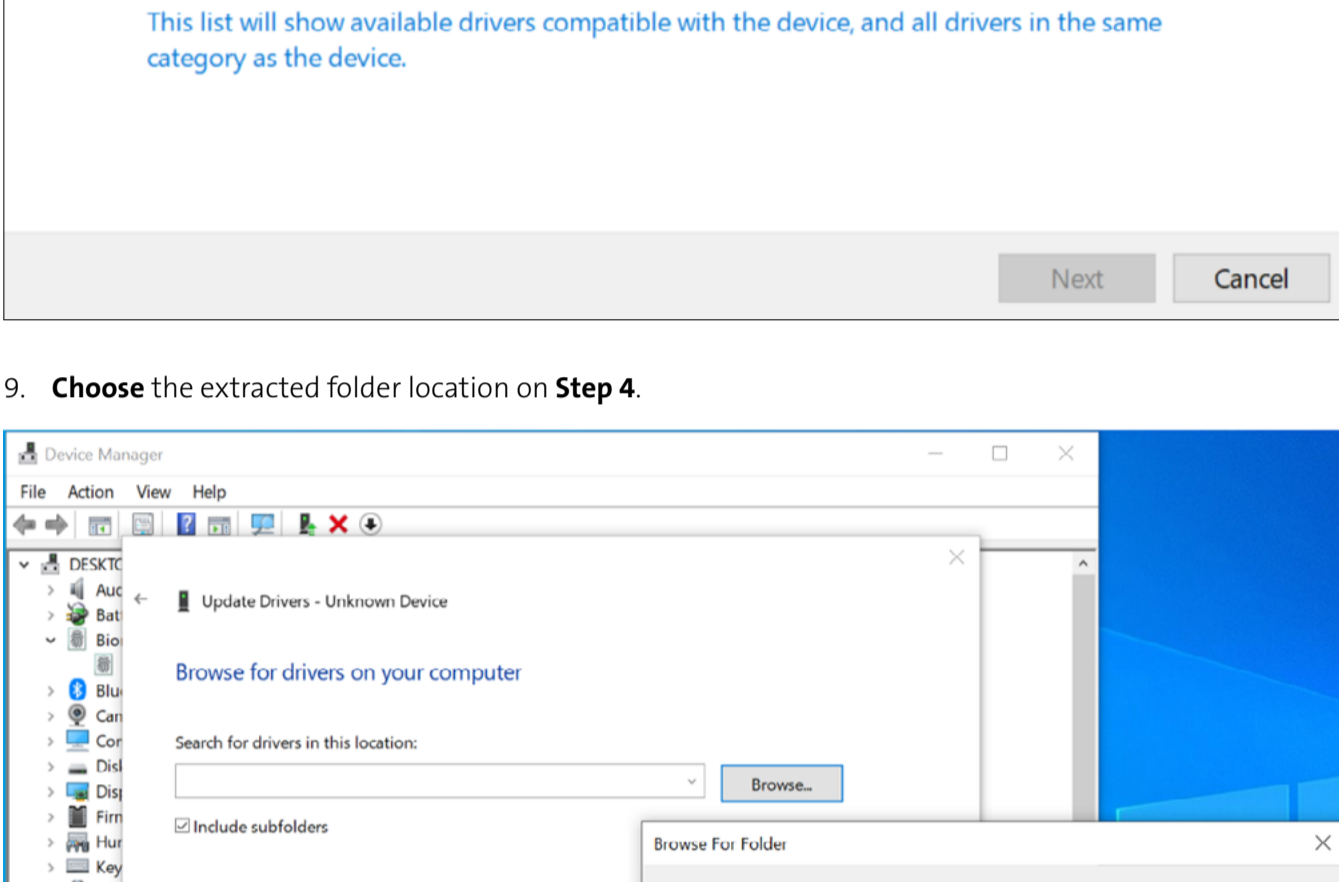
6. Go to **Device Manager** and right click on the unknown device and select **Update driver**.



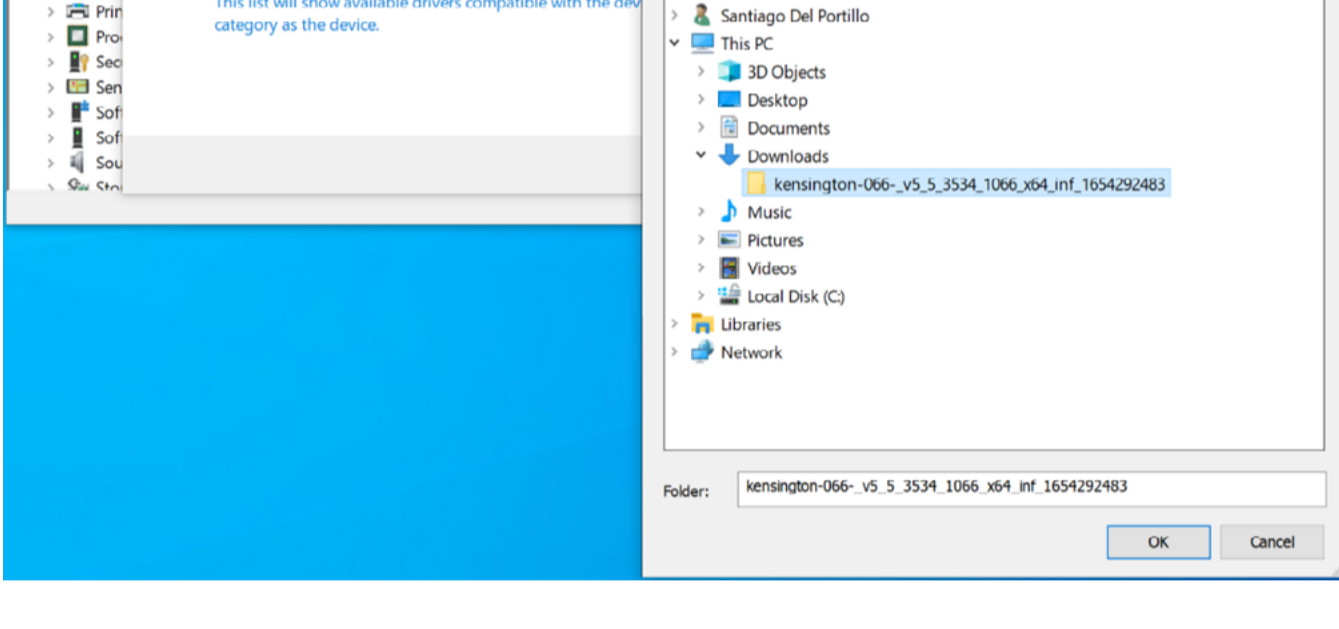
7. Click on **"Browse my computer for drivers"**.



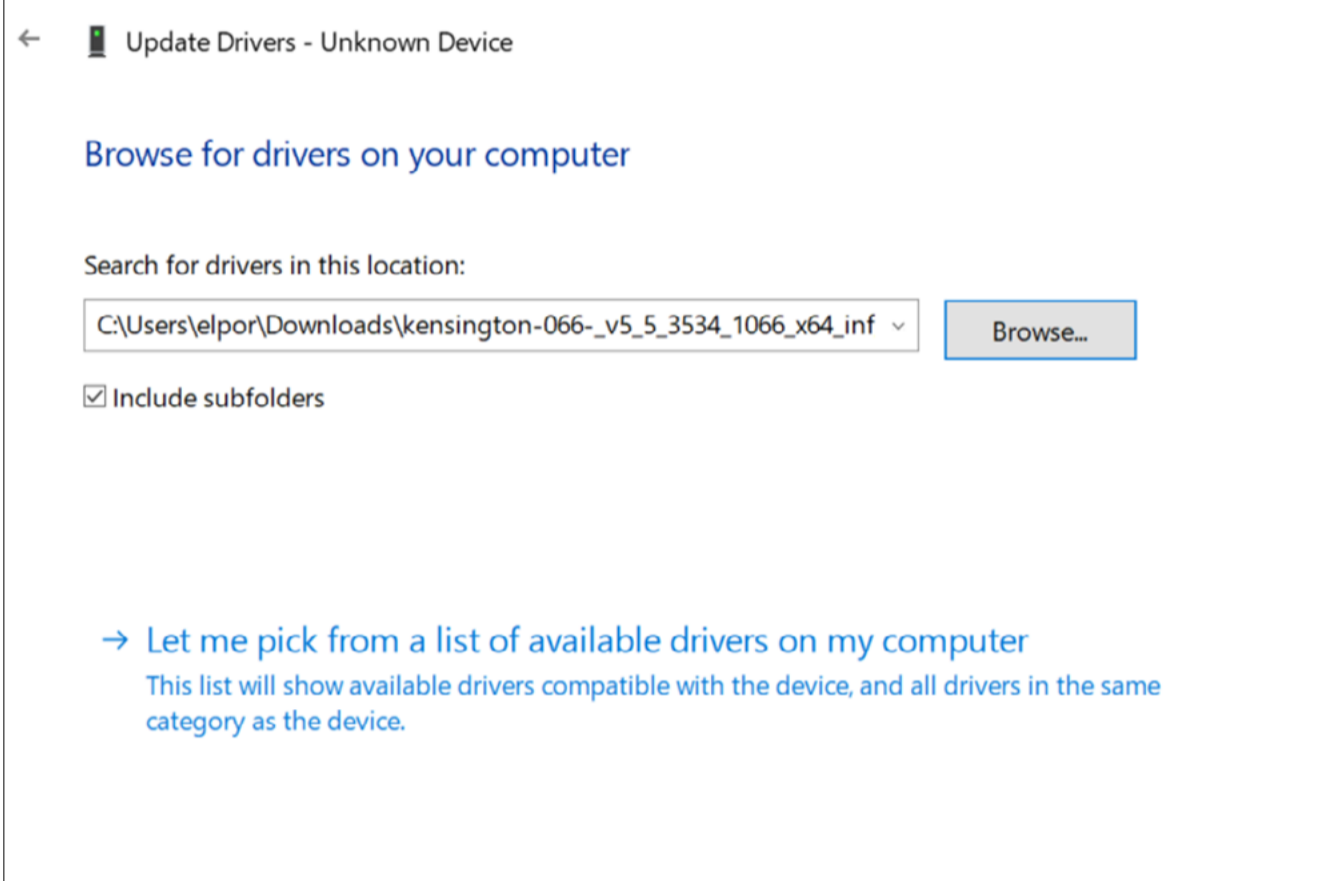
8. Select **Browse** to select a folder on your machine.



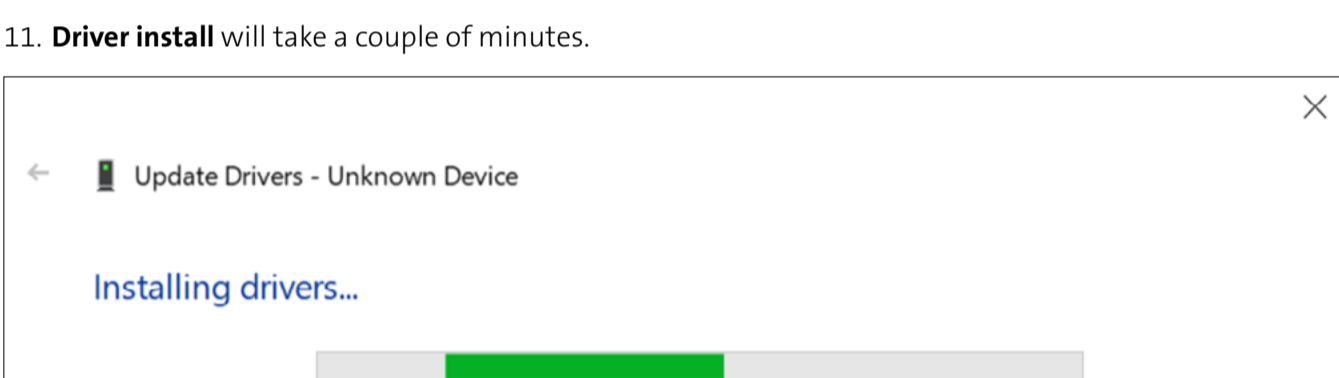
9. **Choose** the extracted folder location on Step 4.



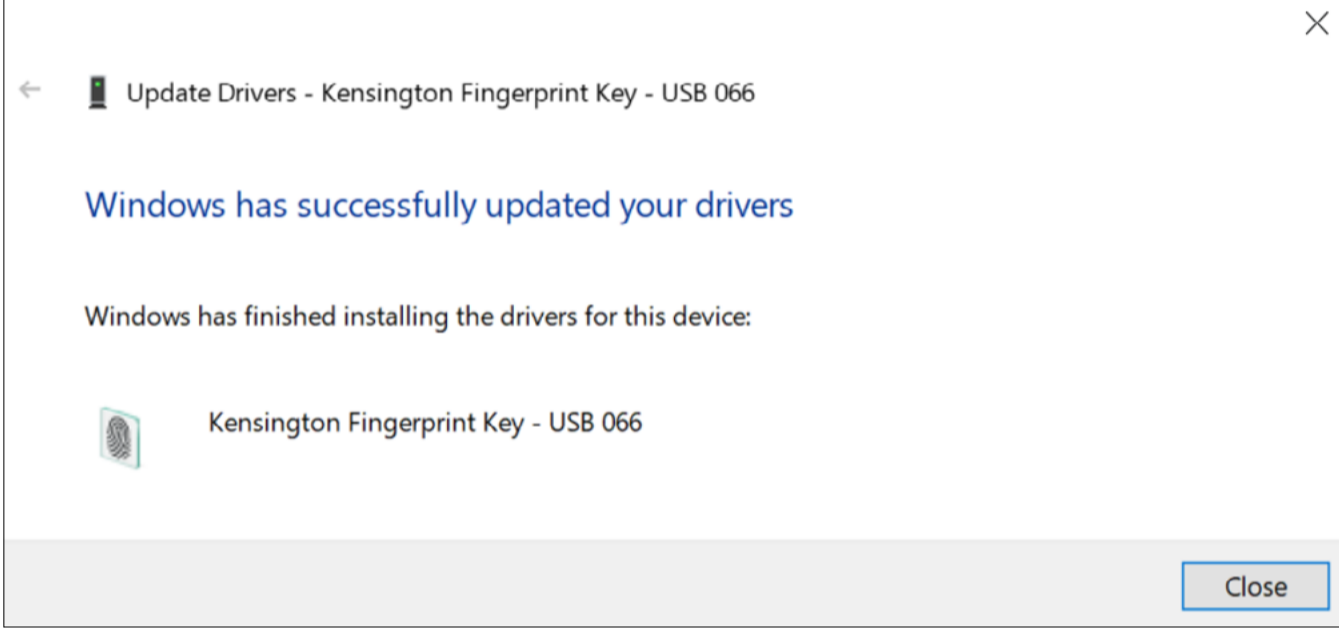
10. Click **Next** to install the driver.



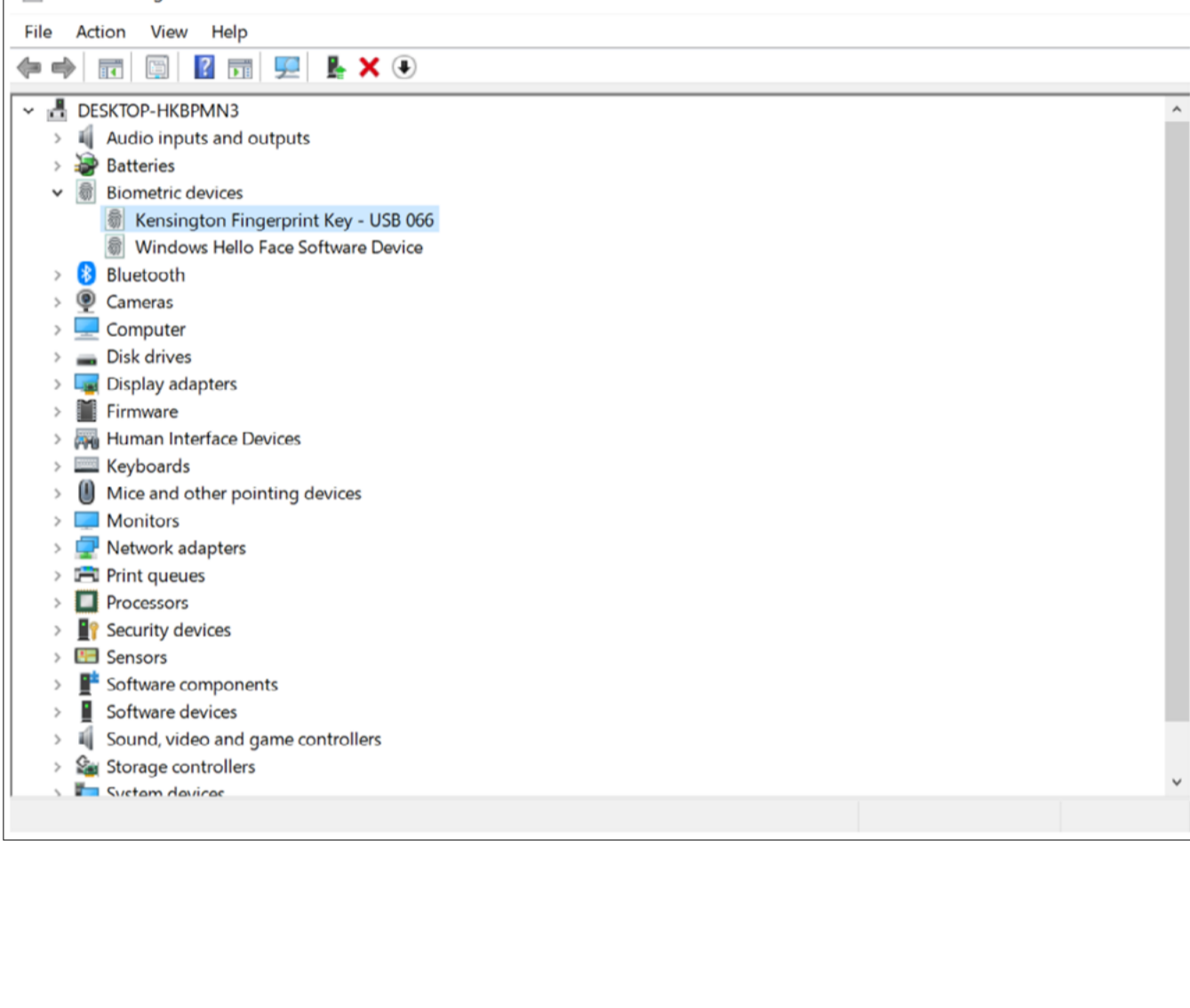
11. **Driver install** will take a couple of minutes.



12. Once **successfully installed** click close.

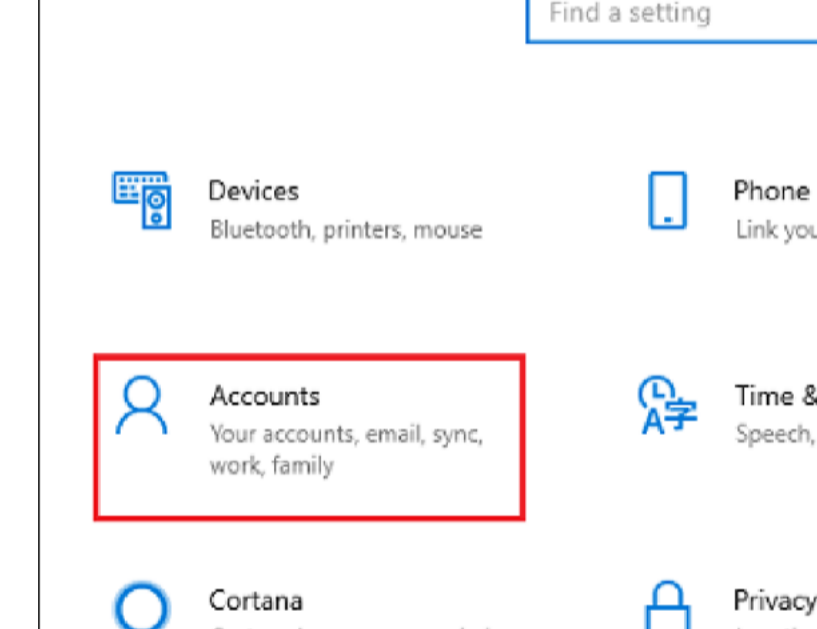


13. Kensington fingerprint key will show on device manager.

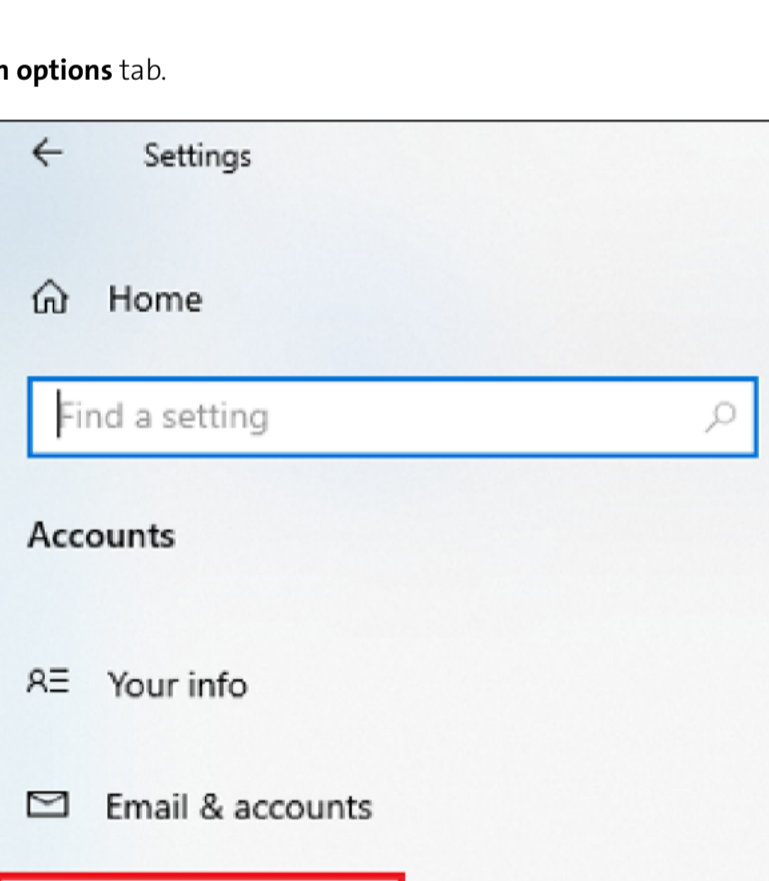


VeriMark™ Windows 10 (Windows Hello) Setup Guide

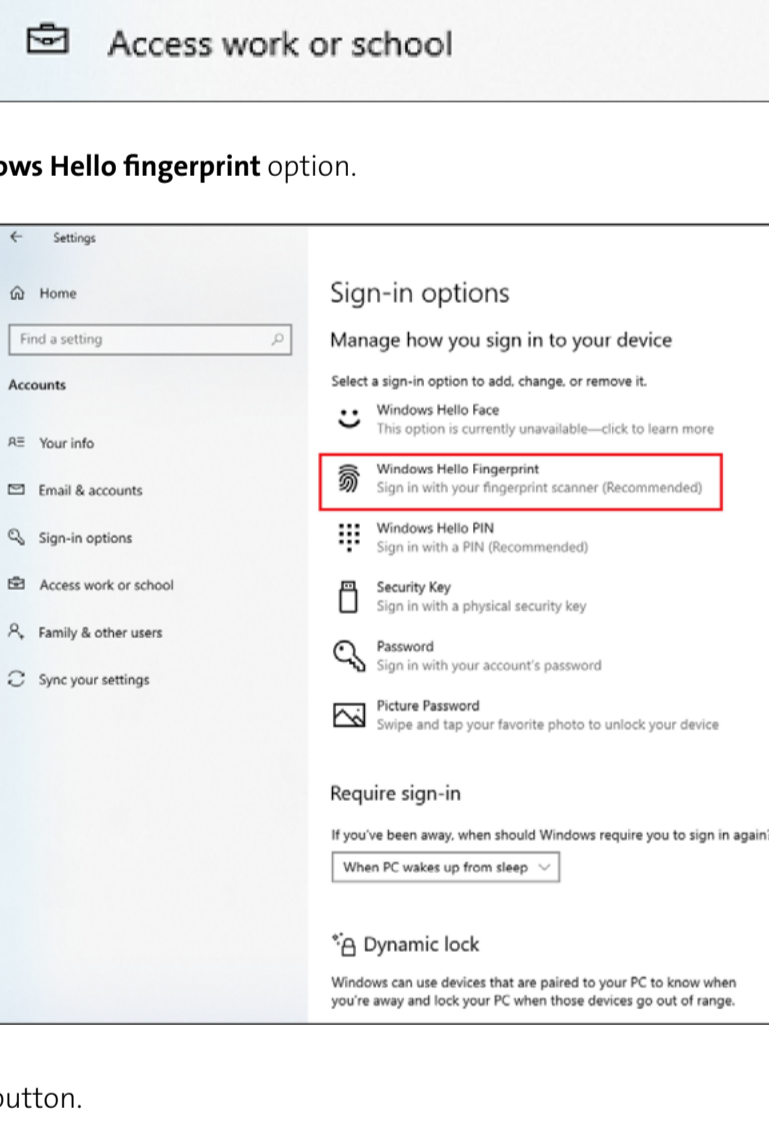
1. Select and click the **START** icon and select **Settings**.



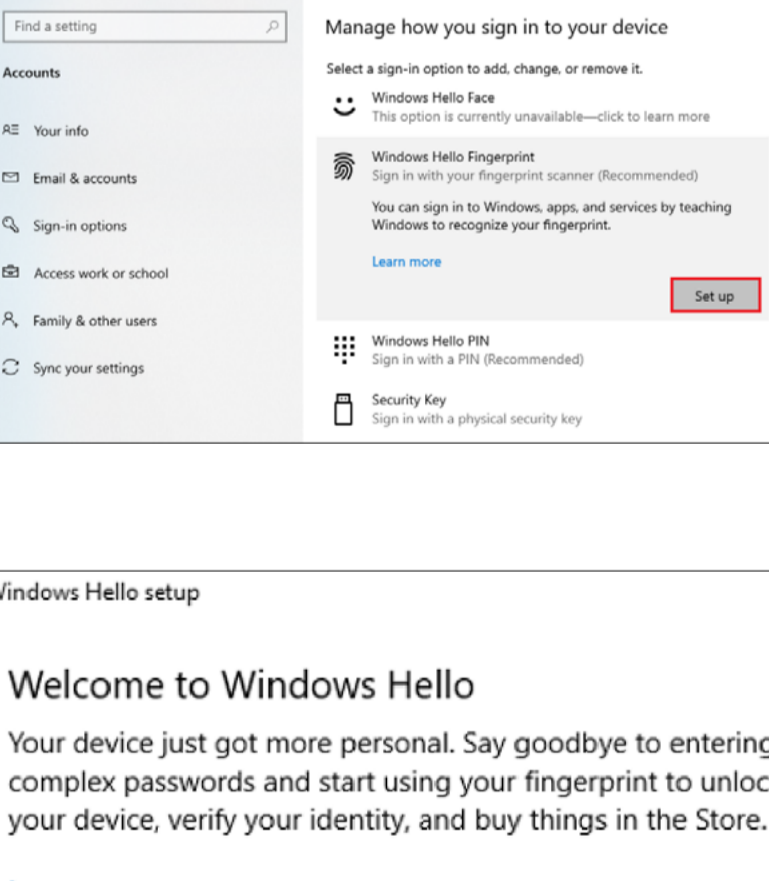
2. Select **Accounts**.



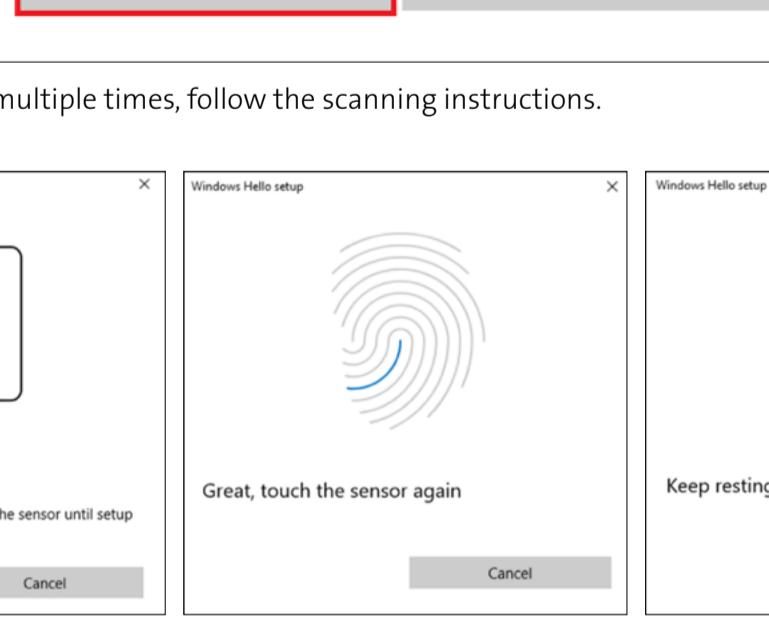
3. Click on the **Sign-in options** tab.



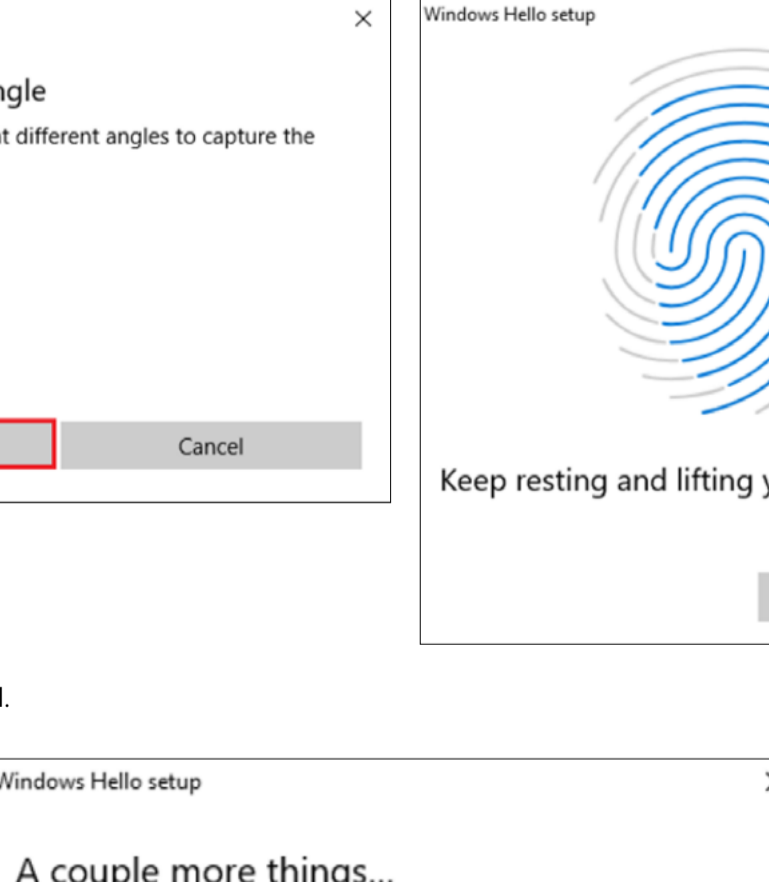
4. Click on the **Windows Hello fingerprint** option.



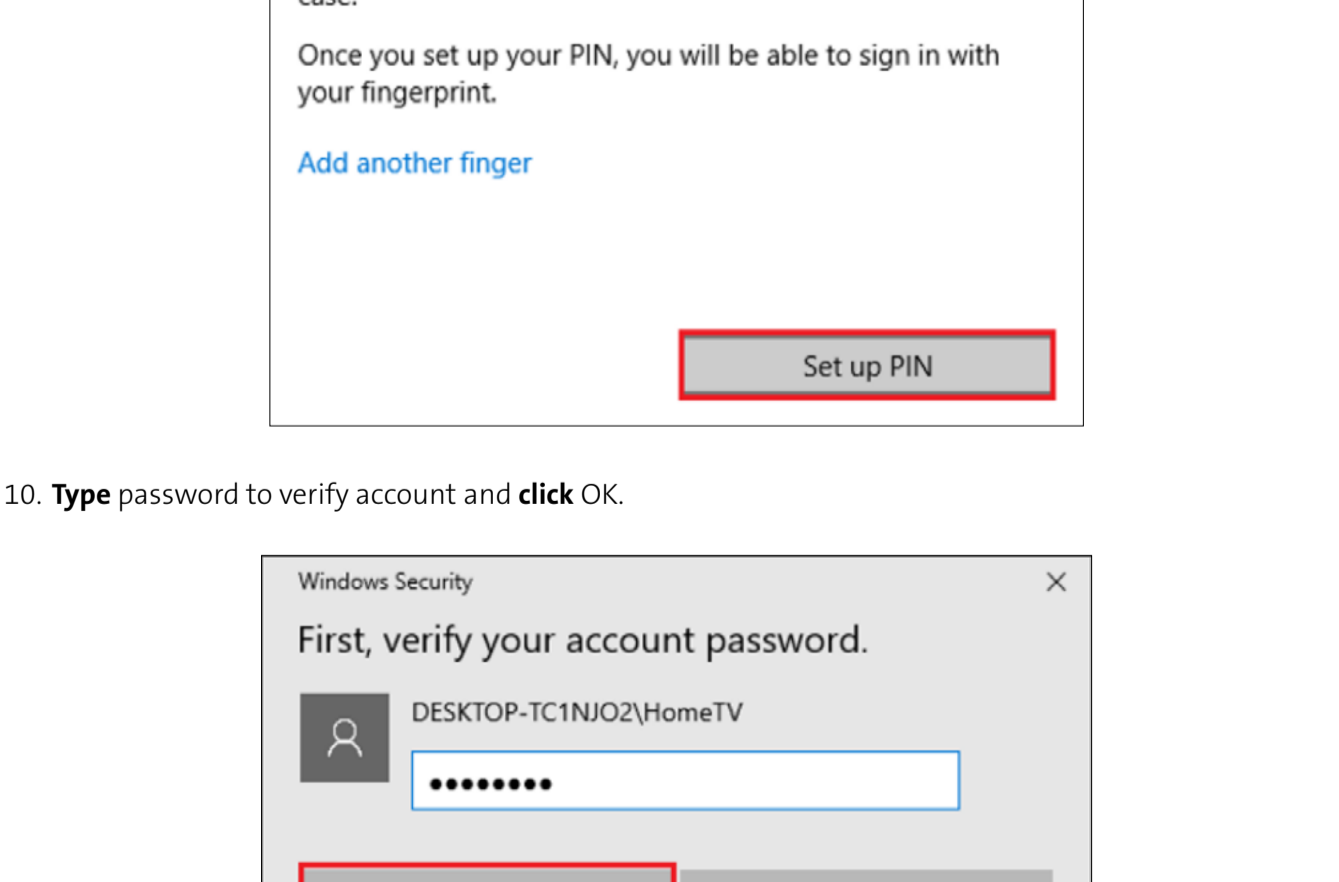
5. Then click **Set up** button.



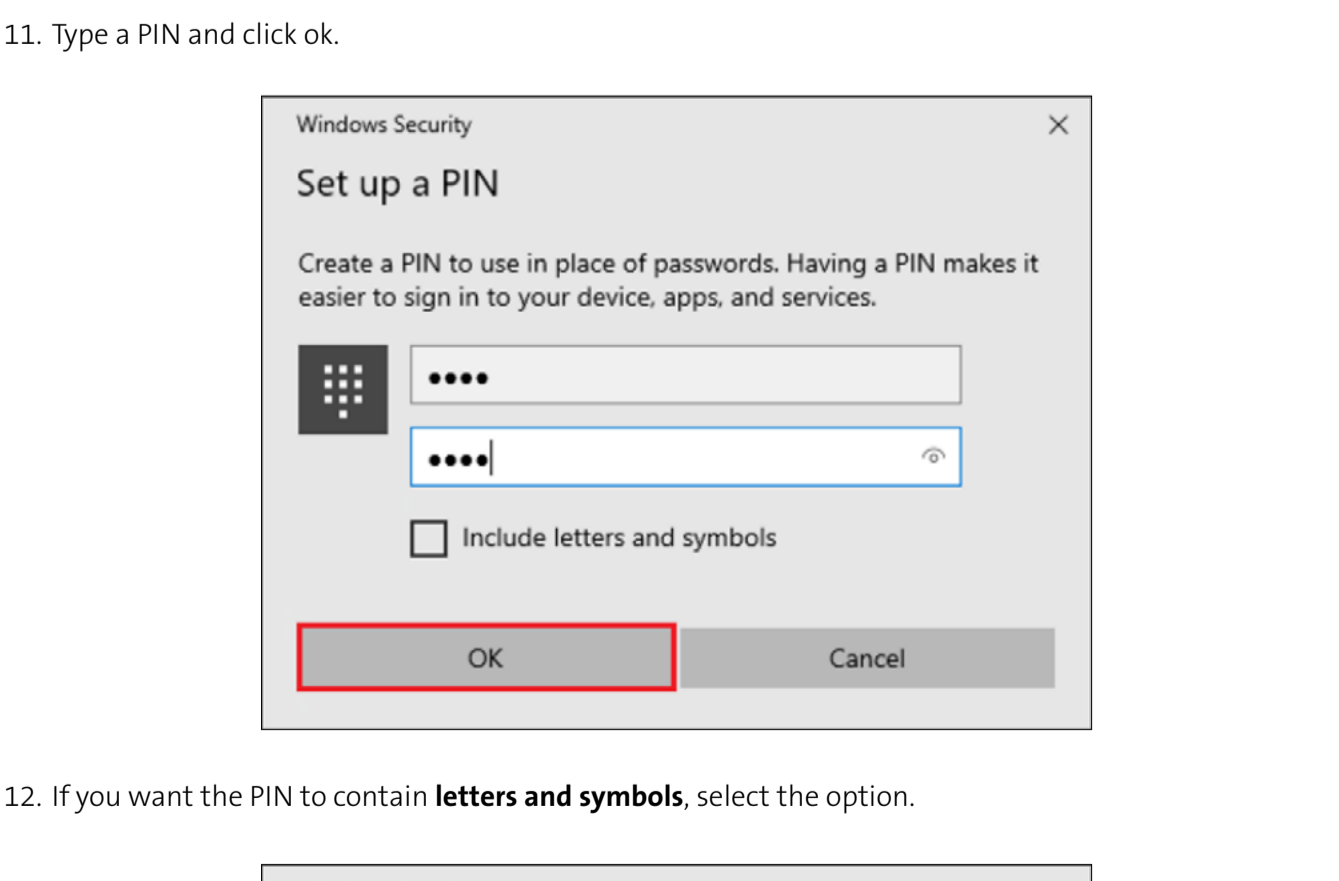
6. Click **Get Started**.



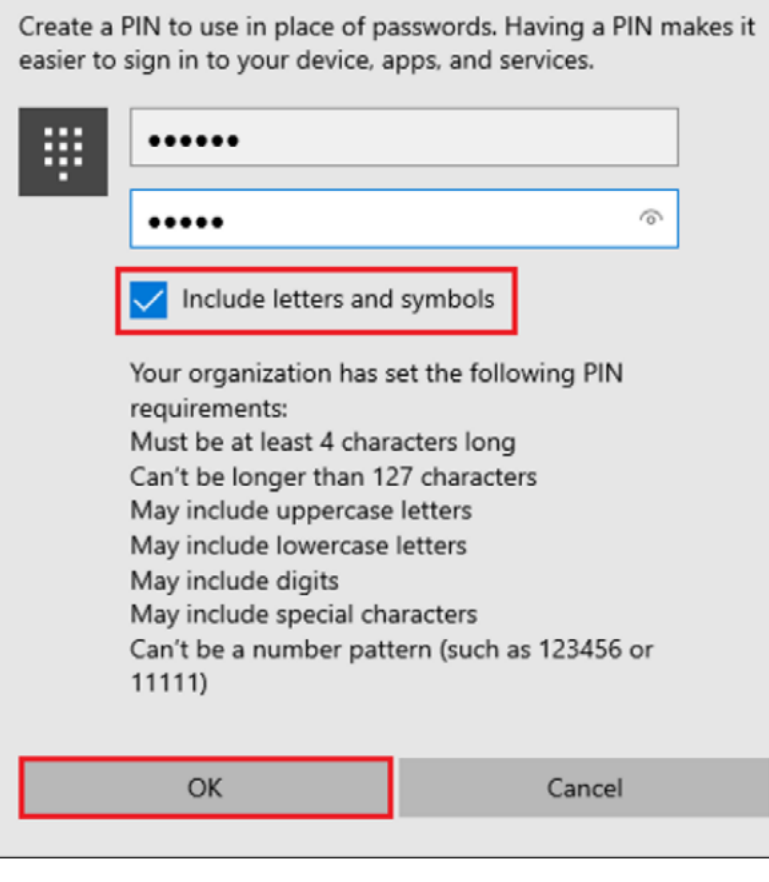
7. Touch the sensor multiple times, follow the scanning instructions.



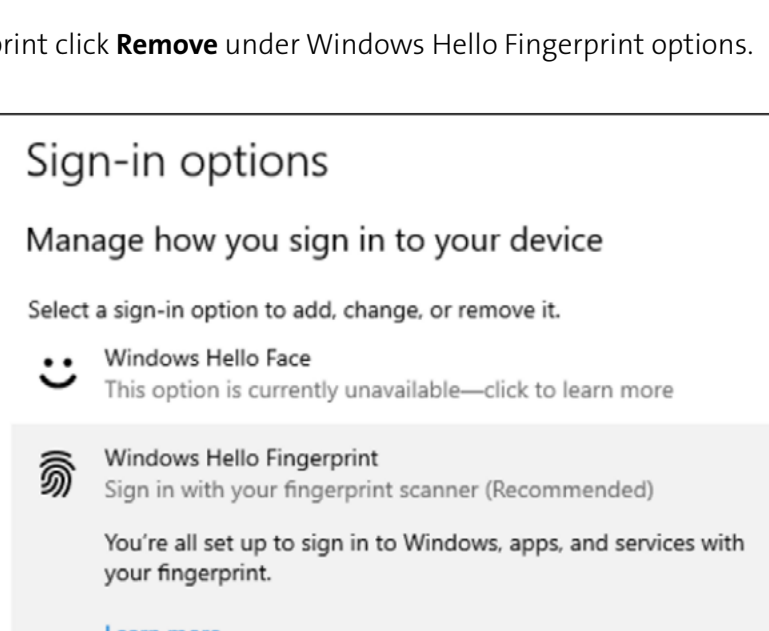
8. When prompted to try another angle **click next** and continue scanning and follow instructions.



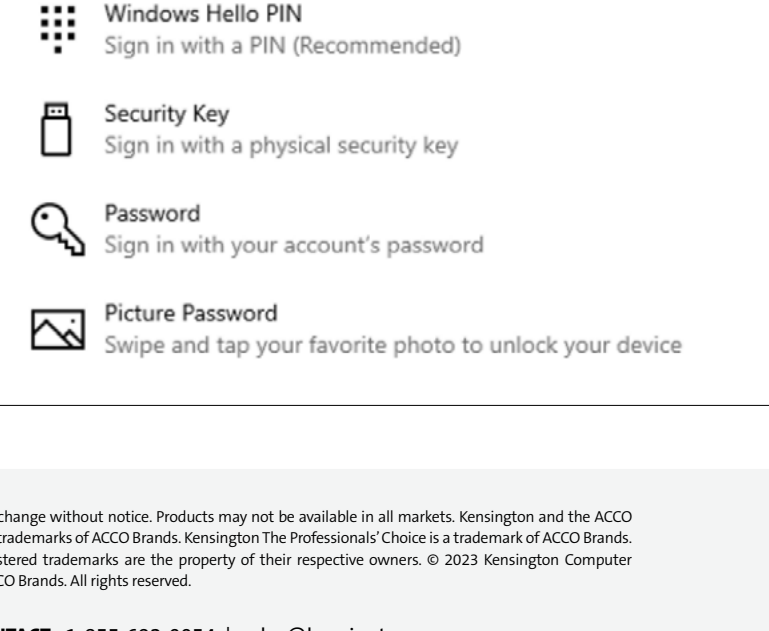
9. Click on **set up PIN**.



10. **Type** password to verify account and **click OK**.



11. Type a **PIN** and click ok.



12. If you want the PIN to contain **letters and symbols**, select the option.

How to Remove your Fingerprint.

1. To remove finger print click **Remove** under Windows Hello Fingerprint options.

